

LIGHTS & GPS



9470RS

9490

9460

Remote Area Lighting System



GPS 72 H

Etrex 10

Etrex 20

Etrex 30

GPS



9410L LED lantern

VD 007 LED

Heavy Duty Lights



VD 1010 LED

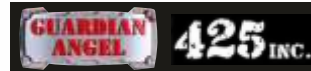
LED DRAGON SEARCH LIGHT

Make- Vishwa, Model VD-1010

Technical Specification:

- LED: high power 10W CREE T6
- Input AC charging :AC220V50Hz
- Oprating Time: Up to 4 Hrs Approx
- Handle: Integrated body Part
- Function: Strong, Super Strong, Flasher
- Battery: Rechargeable SMF Lead Acid
- Battery Recharge Time : Approx 8 hrs
- Belt: Adjustable Shoulder Belt Provided
- Range: Up to 1000m (Approx)

BRANDS



Flat No.: G-1, Mahavir Plaza , Ring Road No.1,
Raipur, Chhattisgarh - 492001

& Fax - +91-771-4099940 ☎ +91-91791-70000

✉ vishwarpr@yahoo.com 🌐 www.vishwadecors.com



VISHWA DECORS

Fire-Fighting Vehicle, Disaster Management
& Industrial Safety Equipments
Manufacturers & Distributors



HI VISIBILITY REFLECTIVE SAFETY JACKET

Design - Front Opening 2 Vertical + 2 Horizontal, Type 2, CLASS II of IS 15809 : 2017 standards

Fabric - The basic fabric used shall be high visibility fluorescent Dyed material for enhanced day time visibility consisting of 100% polyester yarn in warp and 100% cotton yarn in weft, woven in 5 end warp satin weave so that Polyester yarn having high reflection property will project on the upper surface of garment and cotton yarn having low reflection property will remain in the inner surface of garment and provide sufficient comfort to the wearer even though worn over regular clothing. The overall blend composition shall be 65 + / - 5 % Polyester and the remaining cotton when tested as per specification no. IS: 3416-1988. Mass of background material shall be 200g/m² when tested as per specification no. IS: 1964-1970 R.A. 1988. The Basic fabric shall Confirming to EN 471 : 2003 + A1 : 2007



Reflective tape - Glass bead material of 50 mm wide Band of new material Confirming to IS 15809 2017 shall be used. Retro reflective material shall be certified for 60x wash cycles and having initial reflectivity of 500 Cd/(lx.m²) 3M-USA(Product code-8912) or equivalent

Sewing Thread - 100% Spun Polyester 3 ply sewing thread of matching color of best trade quality shall be used for stitching.

Marking of Departmental Identity shall be provided using printing - Material (Printing Matter) provided by the Indenter on a micro prismatic reflective label stitched at the back of the garment. In front side, the same shall be in reflective material garments, Marking shall be printed on the back surface of the Micro prismatic reflective film so as not to expose the same to washing etc... The film shall then be assembled with PVC film backing and sealed on all 4 sides with a minimum of 5 mm width using R.F. Welding to create labels. One set of marking consists of marking provided on front and back sides of one garment.

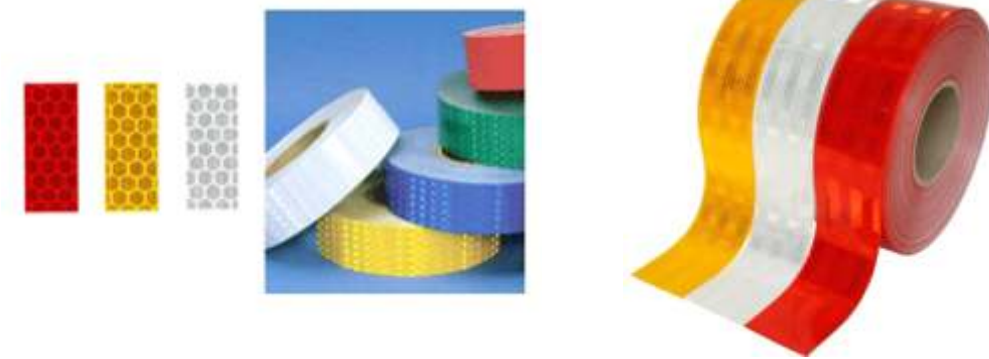
Fasteners - High Quality Hook and loop of size 50 mm x 50 mm (2 nos)
Following test certificate and documents to be.

1) ISI Marking and license certificate

- 2) Tenderer should be submit must test certificate by a Government laboratory for the background material confirming to IS 15809: 2017 standards.
- 3) Tenderer should be submit must test certificate of Retro Reflective tapes certified by the Government linked laboratory certifying that the reflective tape confirming to IS 15809 2017 standards.
- 4) The retro reflective material should be certified by the manufacturer to Withstand 60x wash cycles @ 40° degree C and for Temperature Variation test.
- 5) Reflective material authentication and warranty letter from manufacturer of retro reflective material

REFLECTIVE RADIUM TAPE RETRO

Radium Tape high intensity micro-prismatic grade: -Radium tape shall be of Red/Green/Yellow/White color Retro reflective high intensity micro prismatic type-IV tape (As per IRC 67/2010). The Sizes of retro reflective tape size of 2" x 50 Mtr.



PLASTIC CONE WITH CHAIN

SPECIFICATIONS :

1. Colour : Florescent Orange.
2. Square Base : 385 mm X 385 mm.
3. Conical cone.
4. Height with base : should not be less than 750 mm.
5. Weight : should not be less than 4 kgs 800 gms.
6. Four Strips for fixing plastic interlinking Chain/Rope.
7. One no of 4" & 6" Reflective sleeves each should be used for night vision.
8. Black Rubber base should be inserted in the cone through injection moulding only and not should be temporarily fitted.
9. Two Grooves for fixing of reflective sleeves. On the top groove 6" sleeve should be fit and 4" sleeve should be fixed at the bottom groove. Double sleeves give more reflectivity and grooves help the sleeve to be fixed firmly on the cones. Grooves do not let the sleeve to torn off or get off the cone. Size of top groove should not be less than 159 mm & size of bottom groove should not be less than 101 mm.



ONE PIECE MOULDED FENCE BARRIER



Make – Sintex, Code : FNB - 2012 - 01

OVERALL DIMENSIONS : 2000 mm (L) x 550 mm (W) x 1200 mm (H).

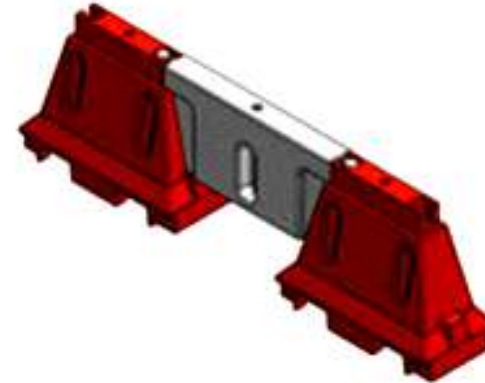
DESCRIPTION : One piece moulded Fence Barrier made from superior grades of UV stabilized polyethylene materials. The body provided with oval shaped openings (4 nos.) and self support type 2 nos legs. The fence barrier to have inbuilt provision for interconnection as well as rotation up to 90 degree. The overall size : 2000 L x 550 W x 1200 H mm with usual process variation.

COMBO WALL BARRIER (NESTABLE BARRIER x 2 NOS + CONNECTOR x 1NO)

Make – Sintex, Code : RDB - 2680-01 CW

OVERALL DIMENSIONS : 2685 mm (L) x 470 mm (W) x 800 mm (H).

DESCRIPTION : Combo Wall Barrier in CKD form consisting of One piece moulded Nestable Barriers - 2 nos and Connector - 1 no. made from superior grades of UV stabilized polyethylene materials. Nestable road barriers with 2 way entry type base compatible with forklift and provided with corrugated ribs The barrier to have inbuilt provision for mounting of connector piece for straight as well as rotation up to 90 degree and with adequate slope and support ribs for resting of the connector piece to avoid load on its neck. The assembled overall size : 2685 L x 470 W x 800 H mm with usual process variation.



TRAFFIC CONE

Make – Sintex, Code : TCN 4080 - 01

OVERALL DIMENSIONS : 414 mm (L) x 360mm (W) x 875 mm (H).

DESCRIPTION : One piece moulded Traffic cone made from superior grades of UV stabilized polyethylene materials with hexagonal base for proper stability and rectangular flat portion at top for proper display .The overall size : 414 L x 360 W x 875 H mm with usual process variation



NESTABLE TRAFFIC CONE

Make – Sintex, Code TCN 3875- 01 N

OVERALL DIMENSIONS : 380 mm (L) x 55 mm (W) x 750 mm (H).

DESCRIPTION : One piece moulded Traffic cone made from superior grades of UV stabilized polyethylene materials with hexagonal base for proper stability .

'The overall size : 380 L x 55 W x 750 H mm with usual process variation



ALCOHOL ANALYZER | Make – Vishwa, Model – VD50

SPECIFICATION OF ALCOHOL ANALYZER

Alcohol Analyzer is new generation alcohol analyzer. The newest technology has been used in this device. It has used Fuel cell sensor which doesn't react with other substances, so make sure the accuracy of the test. Alcohol Analyzer used the professional gas flow measurement technique, this ensures that the sensor receives only deep lung air which reflects the blood alcohol content correctly. The patented technology of the continue passive mode and fast mode can be used for fast scanning Alcohol Analyzer is easy to operate with three buttons The device is equipped with 50,000 data memory and USB port. The data can be printed out through a printer or managed in PC. The PC software allows the user to take maintenance, calibration and the device settings.

Technique Data

. Sensor	Fuel Cell
. Measurement Range	0-550mg/100ml
. Measurement Accuracy	0-80kg/100ml;=5mg/100ml
. Measurement Time	< 10 Seconds
. Zeroing Time	< 5 Seconds
. Blow Volume	1.0Lor according to Customer Requirement
. Display	2.8 inch, Full graphic TFT
. Data Store	up to 20000 Measured Value
. Real Time Clock	Yes
. Battery	Li-ion, 7.4V, 1300MAh
. Calibration	Every 6 Months
. Operation Temperature	-5°Cto+50°C
. Storage Temperature	-20°Cto+60°C
. Dimension	L180mm*w70mm*H30mm
. Weight	250g

Products features

- . Active Mode And Passive Mode
- . Menu Operation, Easy To use
- . Data Review and Print Of The Device
- . Data Memory For 20,000 Measurement, USB Port
- . Built –in Printer



SOUND LEVEL METER | Make – Vishwa, Model – VD1350

Features

- . 10mm (0.4") LCD Display
- . Auto Manual Shutdown
- . Low Battery indicator
- . DC Output : 0 ~ 1.3V 10mV/db
- . A', 'C' or 'Flat' Weighing with Slow / Fast response
- . 94db in full Calibration at (1KHz)
- . Optional RS-232 Communication
- . (Advances Software Program for allWindows)
- . Alarm Volume o/p : 30 ~ 130db
- . Alarm o/p : LED Optional Relay Output
- . Backlight





WHEEL CLAMP LOCK (BIG FOR CAR)

SPECIFICATION OF WHEEL CLAMP LOCK (BIG FOR CAR)

Make – Vishwa, Model – VD162

Specifications:

1. Hardened material
2. Should immobilizes all types of tempo's & jeeps
3. Brass Dimple key's would be given preference
4. POLICE logo should be on the clamp Should be very easy to operate Keys should be separate for each lock
5. Minimum 3 keys for each to be provided
Minimum Weight 3.5 to 4 kg



WHEEL CLAMP LOCK (SMALL)

Make – Vishwa, Model – VD163

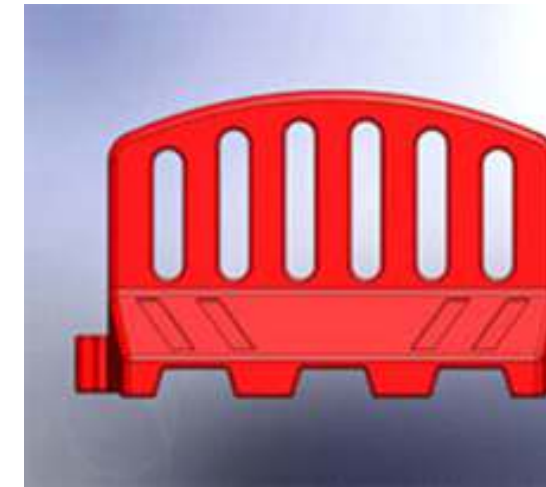
Features:

Strong design
Durability
Compact size

Specifications:

It can be adjusted to fit 7 to 11 inch width tyres., Double protection to resist cutting and drilling. It is soft coated to prevent wheels or rims from damage, Fits in almost any types of vehicles and equipments.

ROAD BARRIER EXPANDABLE 1.5 MTR.



Make – Sintex, Code : RDB - 1510-01

OVERALL DIMENSIONS : 1500 mm (L) x 430 mm (W) x 1020 mm (H)

DESCRIPTION : One piece molded 1.5 Mtr. Road barrier made from superior grades of UV stabilized polyethylene materials with 2 way entry type base compatible with forklift and provided with corrugated ribs at bottom.The body provided with oval shaped openings (6 nos), ribs(4nos) on the slant portion of the body and suitable provision for filling and drain of water. The barrier to have inbuilt provision for male-female type interconnection locking system The overall size : 1500 L x 430 W x 1020 H mm with usual process variation.

ROAD BARRIER EXPANDABLE 1 MTR. "L"

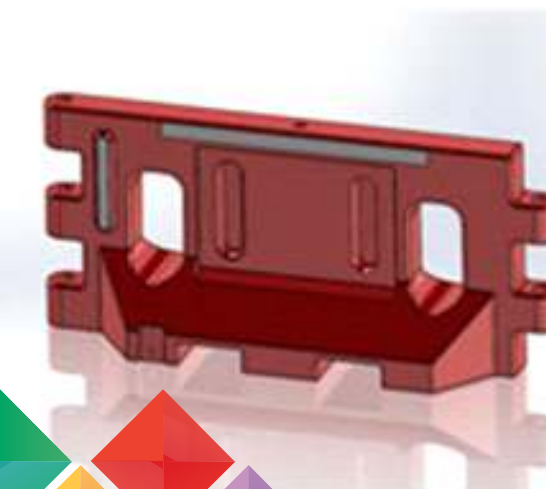


Make – Sintex, Code : RDB - 1075-01

OVERALL DIMENSIONS : 1000 mm (L) x 350 mm (W) x 750 mm (H)

DESCRIPTION : One piece moulded L type road barrier made from superior grades of UV stabilized polyethylene materials with 2 way entry type base compatible with forklift and provided with corrugated ribs at bottom.The body provided with oval shaped openings (5nos) and suitable provision for filling and drain of water. The overall size : 1000 L x 350 W x 750 H mm with usual process variation.

ROAD BARRIER 2 M. EXPANDABLE



Make – Sintex, Code : RDB - 2090-01

OVERALL DIMENSIONS : 2020 mm (L) x 610 mm (W) x 900 mm (H)

DESCRIPTION : One piece moulded 2 mtr. road barrier made from superior grades of UV stabilized polyethylene materials with 2 way entry type base compatible with forklift and provided with corrugated ribs .The body provided with oval shaped openings (2nos) and suitable provision for filling and drain of water.The barrier to have inbuilt arrangement for interconnection,interlocking and rotation up to 90 degree.The overall size : 2020 L x 610 W x 900 H mm with usual process variation.

SOUND LEVEL METER | Make – Vishwa, Model – VD4010

Features & Specifications

- 2.2" LCD screen
- Measuring range: 30~130 dBA / 35~130 dBC
- Accuracy: +/- 1.5dB
- Digital & resolution: 5-Digit & 0.1dB
- Frequency response: 31.5Hz~8.5KHz
- Measuring gear: 30~130, 40~90, 50~100, 60~110, 80~130
- Frequency weighting: A (imitating human ear) / B (machinery noise)
- Time weight: Fast / Slow
- Sampling rate: 2 times per second
- 1/2 inch condenser microphone
- Peak-Hold
- Overload display: Over / Under
- Powered by 4 x AA batteries (included)
- Dimensions: 9.25 in x 2.76 in x 1.34 in (23.5 cm x 7.0 cm x 3.4 cm)
- Weight: 7.97 oz (226 g)



LUX METER

Make – Vishwa, Model – VD164

Max. Range – 10,000.00
With USB Cable





SPECIFICATION OF SAFETY LIGHT BAR (RECHARGE-ABLE WITH TORCH)



- 1.Safety Light Bar should be made out of strong material Polycarbonate & ABS.
- 2.It should have having total length of 319 mm with Gripping handle and Blinking Portion
- 3.An Electronic PCB board should be fitted in the light bar.
- 4.Small Size LEDs (6 nos. of Red, 6 nos. of green & 1 no. of white) should be fixed on the board which glow when energy is transmitted through it.
- 5.For proper sealing, water resistant ring should be provided around the polycarbonate Handle which increases the life of safety bar in all weather conditions.
- 6.A Multifunction switch is provided to select desired function i.e. OFF/ ON BLINKING RED /BLINKING Green and Powerful LED on the Top for Working as Torch.
- 7.A rechargeable socket should be provided in the light bar for Charging purpose.
- 8.An adaptor should also be provided with the light bar for charging rechargeable Battery.

SPECIFICATION OF ROAD STOPPER IRON

Road Stopper made up of Iron which is of Yellow color, whose weight will be approx- 35 Kg. There is a message plate specially for writing a message with radium on that plate. "STOP C.G. POLICE, DIST.-Name" This Print will be on both side of Stopper.
Size of Stopper -
Length - 8feet | Height - 3.5 feet | Width -2.5 feet



SPECIFICATION OF LOUD HELLER



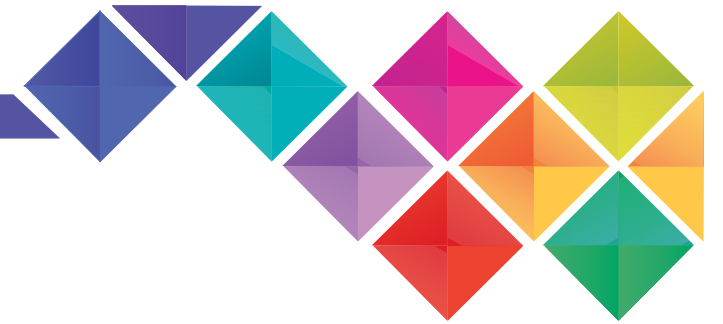
Dry cell & 12v car battery operation.all abs body, sturdy yet lightweight. Built-in siren, clear sound, long range & efficient design. Microphone with volume control & press-to-talk switch

SPECIFICATION OF NOSE MASK SPECIFICATION



- 1.Filtering half masks in fold flat style to protect against particles shall have ISI Marking with valid License No. on the Respirator.
- 2.Filtering half mask should meet - FFP2 class efficiency (above 94% particulates) Shall meet NaCl particle test as per IS 9473:2002
- 3.Respirator shall be filtering face piece fold flat type produced substantially or entirely of filter media to fit on the face covering the nose and mouth comfortable so that fine particles does not enter from the edges. The media shall be in Grey color to suit the rigorous working condition.
- 4.The filter media shall be welded at all edges ultrasonically to give leak proof design.
- 5.Single Exhalation valve on each respirator may be provided to prevent rebreathing of moist warm exhaled air containing high level of CO2.
- 6.Double adjustable elastic bands of textile braided shall be sewn to the face piece free of metal clips.
- 7.Braided sewn elastic head bands stitched/stapled with textile thread outside the filtering area.
- 8.High tensile strength adjustable nose clip should be provided for leak proof snug fit.
- 9.Net reinforcement shell is there. It has well-integrated structure maintains the shape disallowing collapse and suits rough handling.
- 10.15 numbers respirator shall be packed in individual plastic bags with wearer instructions in English/Hindi inside the bag.
- 11.Factory test report shall be provided as per scheme of test described by Bureau of Indian Standards.
- 12.Training to be provided to users for proper use of Respirator.





SPECIFICATION OF CONVEX MIRRORS



- 130 degree of viewing angle
- For internal and external purposes
- Light weight and secure fixing
- Made of one piece polycarbonate lens which is damage resistant
- Brim and back holding plate is metal / FRP
- Polycarbonate Convex Mirrors are 200 times stronger than glass
- Not affected by any type of light ray
- Will not produce toxic fumes if burnt
- Ideal for areas prone to vandalism

SPECIFICATION OF HAND GLOVES

Colour - Orange, Red Or Green
Heat Reflective Tape - 3m



TRAFFIC HAT

- 1-Color- White
- 2-4 Holes Around the hat
- 3-Having 1 clip
- 4-1 Belt for tying
- 5-Size in Oval



SPECIFICATION OF ROAD STOPPER (IRON WHEEL BASE)



Road Stopper is made-up of Iron which having the wheel in base, by which it can be move easily. It also have handle both the side by which it can be carried and move. There is a message plate specially for writing a message with radium on that plate. Whose size is Length- 3feet, Height-1.5feet. "STOP C.G. POLICE, DIST.-Name" This Print will be on both side of Road Stopper.

Size of Road Stopper-
WEight - 80 kg Wheel Base, | Length-6 feet
Height-4.5 feet Width-18 inch

SPECIFICATION OF PA SIRON ASSLY. COMP. SET

It's a Complete Set of PA Siron, It's having a Mick Amplifier, Stand, 4 speaker.

Speaker having good quality of sound



AHUJA PA SYSTEM COMPLETE SET



REVEAL BODY WORN CAMERA

TECHNICAL SPECIFICATIONS OF REVEAL BODY WORN CAMERA SYSTEM

- ▶ Must do both Audio and video recording
- ▶ Alpha numeric device ID for easy identification
- ▶ Simple sliding switch to start recording
- ▶ Dimension less than or equal to 100mm X60mmX30mm
- ▶ Weight of the camera - 150g Maximum
- ▶ Audio signals to be provided for record, stop record, low battery, low memory
- ▶ Rotatable camera head (articulation) - 300° horizontal, 170° vertical
- ▶ Field of view - 100° horizontal, 50° vertical
- ▶ Recording Speed – Option for both 25 and 30 frames per second. Settings to be changed only through the application software
- ▶ Recording resolution- Option for 480p, 720p and 1080p. Settings to be changed only through the application software
- ▶ Encoding technology, video - H264, Audio - MPEG-4
- ▶ Battery life – 6 hours continuous recording, screen on
- ▶ Battery Charging time - 8 hours
- ▶ Memory- internal, Reveal encrypted, 32GB minimum
- ▶ Front facing, 2-inch colour LCD screen minimum
- ▶ Able to play recorded audio & video on the screen with Pause and Forward/ Rewind Capability
- ▶ On-screen display - time, date, memory, resolution, recording speed, battery life, recording space available (in Hours:Mins:Secs)
- ▶ To prevent unauthorized downloading of video, AES 256 or better encryption to be provided. Software to enable and disable encryption to be provided
- ▶ Should not permit recording to be downloaded to unauthorized computer
- ▶ Trusted mode (On/Off) that prevents the camera from being recognized as a storage device on any PC other than the authorized computer running the evidence management software
- ▶ Pre-recording facility to store at least 30 seconds prior to recording reveal activation
- ▶ Recording on camera un-editable and undeletable by user
- ▶ Camera to have Stealth mode facility to enable recording without screen or lights or sound. Feature should be user controlled through the camera
- ▶ Camera should have pre-recording facility. reveal When enabled, it will store 30 seconds of video prior to record activation
- ▶ There should be button to mark important videos immediately for easy identification
- ▶ Water resistant, dust resistant, impact resistant and should be operable in normal rainfall (IP 65 or better)
- ▶ -10° to 50° Centigrade operating temperature
- ▶ RoHS/FCC/CE certified
- ▶ Crocodile mounting clip for wearing on the uniform of the police officer
- ▶ Tender should be submit single work order 150 Nos. and SGS inspection Reports and service center Madhya Pradesh & Chhattisgarh.
- ▶ OEM/Distributor should have supplied body worn camera systems to at least 5 police/ government departments in India. Details of supply to be provided



Make : ACME | Model : TARGET

MATERIAL : Polyester Tafetta fabric with Nitrile PVC coating (0.20 mm thickness), water repellent, eco friendly, non toxic fabric.

GENDER : Male

DESCRIPTION :

- o Acme rainsuit logo embossed on Nitrile PVC coating to signify quality assurance at manufacturing end
- o Special inner Tapping along stitches for total rain protection
- o Jacket attached hood with drawstring closure
- o Two Pockets with flap on the front
- o Chest fastened by premium grade virgin plastic Zipper with double Flap protection
- o Waist adjusted by elasticised Waistband
- o Velcro fasteners at Sleeve cuffs and trouser bottom
- o High visibility Reflective Tape on back for safety at night
- o Packaging: Pouch + Box

SIZE : M / L / XL / XXL

COLOR : Black ; Navy Blue; Gray

Make : ACME | Model : FLASH

MATERIAL : Polyester Tafetta fabric with Nitrile PVC coating (0.20 mm thickness), water repellent, eco friendly, non toxic fabric

GENDER : Male

DESCRIPTION :

- o Special Inner Tapping along Stitches for total rain protection
- o Jacket attached hood with drawstring closure
- o Two Pockets with flap on the front
- o Chest fastened by premium grade virgin plastic Zipper with Double Flap Cover
- o Waist adjusted by elasticised Waistband
- o Velcro fasteners at Sleeve cuffs and trouser bottom
- o Bright Color & High visibility Reflective tape on front & back for safety at night
- o Packaging: Pouch

SIZE : M / L / XL / XXL

COLOR : Fl. Green



Evidence Management Software Specifications:

Data Security & Integrity

- ▶ Full audit trail –facility to record a complete chain of evidence by tracking every action performed in the software (who, what and when). No action to go unrecorded.
- ▶ SHA256 (Serial Hash Algorithm) hash value to be created when videos are uploaded to the software. Hash values to be checked at every action on the file
- ▶ Upload to a secure storage location over encrypted SSL connection. SHA256 hash value to verify that data integrity is kept during the transfer
- ▶ Audit log to record the date and time of action, user who performed the action, computer on which the action was performed and the description of the action

Software Encryption

- ▶ Facility to activating encryption automatically for cameras when connected to software using the same encryption PIN or activating each camera individually using a different encryption PIN
- ▶ Supports 5 to 8 digits encryption PIN
- ▶ Facility to assign recovery PIN to deactivate the encryption on SD card This is required to recover the card if the number of failed attempts to decrypt the card has exceeded the try count
- ▶ Facility to assign try count Between 5 to 10 attempts and the memory card should be blocked after failed attempts
- ▶ Playback on the device is protected and only the authorized person should be able to play back through a keystroke sequence

SAFETY CROSS BELT Make-VISHWA | Model – VD258

Made from water proof strips embedded with high intensity PVC micro prismatic retro reflective band, free size with provided with Velcro fitting or Made from fluorescence orange/green/ yellow colour good quality, polyester fabric using Reflective tape made of PVC micro prismatic type/ high intensity micro prismatic type-VI tape (As per ASTM D 4956-09), free size provided with Velcro fitting.



REVEAL BODY WORN CAMERA



General Functions

- ▶ Upload, search and manage all the evidence video in the same application
- ▶ Simplified GUI in the same window
- ▶ Facility to toggle between tabs to effortlessly switch to the other features
- ▶ Facility to automatically sync the date and time on the camera with that on the computer, removing the need for any manual amendments with an external keypad
- ▶ Simultaneous upload of at least 10 cameras
- ▶ Advanced management wherein Searches can be filtered by Camera, User and Date Range
- ▶ Facility to Configure user roles and access, manage which level of user has access to the advanced features and administrator settings
- ▶ Camera Booking Log-Facility to assign cameras to users with the camera booking log, allowing to keep track of the location of the cameras
- ▶ Facility to mark a video as evidential. This will ensure video is not automatically deleted and is stored in a manner that allows for longer period of storage than normal video files
- ▶ Facility to transfer the evidential videos to DVD or CD, or export it to the desktop
- ▶ Facility wherein the videos are uploaded automatically when the camera is plugged into the computer/ docking station and simultaneously charge the battery
- ▶ Facility to generate extensive reports to keep track of all camera and software usage
- ▶ Prevent deletion except by authorized user profile, but still audited and leave a record of the action taking place
- ▶ Facility to attach unique identification tag to all uploaded media and allow the user quickly obtain the video files at a later date
- ▶ Facility to add context to uploaded media in the form of notes in order to further explain the situation
- ▶ Facility of digital fingerprinting of all uploaded files, as a proof that the data has not been tampered with
- ▶ Facility to create short video clips from the stored videos by setting a start and end point of the footage to be saved
- ▶ Facility to take a snapshot from a video clip and store it separately within the application
- ▶ Flexible implementation platforms like Standalone enterprise network or cloud

User Management

- ▶ Supports 4 Categories Users
- ▶ Complete audit log and Booking logs to find out the actions being done by users on the system
- ▶ Category permission configurable as per the client requirement
- ▶ Ability to hide files. Such masked files to be viewable only by users provided permissions by the administrator

Reports

- ▶ Separate report module to generate various reports
- ▶ Provide camera activity report
- ▶ Generate a graph of disk space used by evidential and non-evidential videos and the total disk space used against time
- ▶ Generates a graph of the number of videos uploaded on each day of the week.
- ▶ Provide report of activity for every user showing the number of uploaded videos, deleted videos, played videos, burned videos, exported videos and snapshots created.

PLASTIC BATTON (Large) Make - VISHWA | Model - VD105

Made out of Polycarbonate material, technical specifications:- thickness: 3.5 mm, length 1 mtr, outer dia 25 mm. The rubber handle grip at the maximum end shall be provided, rubber handle shall also have a hole of approximate 6 mm to pass on the nylon thread for hanging purpose.



PLASTIC SHIELD Make - VISHWA | Model – VD116

Made out of Polycarbonate as per IS no: 14443 without bullet proof test, injection molded, thickness 3.7 mm, length 930 mm, width 630mm, provided with proper hanging/holding strips.



PLASTIC BATTON (SMALL) WITH FROCK Make - VISHWA | Model – VD106

Made out of Polycarbonate material, technical specifications:- thickness: 3.5 mm, length approx 0.55 mtr, outer dia 25 mm. The rubber handle grip at the maximum end shall be provided. Rubber handle shall also have a hole of approximate 6 mm to pass on the nylon thread for hanging purpose.

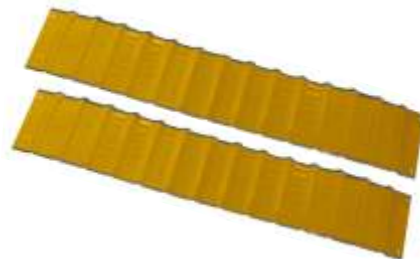


Frock:- The hanging nylon rope made up of Nylon niwar 50 mm wide & 20 mm wide. The 50 mm niwar shall be double stitched, 175 mm length. The hanging upper hook diameter shall be 40 mm of niwar 50 mm wide & the lower hook diameter shall be 40 mm of 20 mm wide niwar.

Holding arrangement:- The upper & lower niwar shall be stitched one side from the body and other end shall be either push button arrangement or adhesive below top

LINEAR DELINEATION SYSTEM Make - VISHWA | Model – VD45

Linear delineation system (LDS panels are fabricated, provided with high intensity prismatic class B, type-IV grade reflective sheeting laminated on 0.4 mm thick aluminium sheet forming crimped wave form shape. The size of LDS shall be 100 mm x 900 mm approximately, edges should be hemed.



SAFETY JACKET Make-VISHWA | Model - VD256

Made from fluorescence orange/green/ yellow colour good quality, polyester fabric, extra large size embedded with high retro reflective bands of 2 nos. vertical & 2 No. Horizontal. Reflective tape made of PVC micro prismatic type/ high intensity micro prismatic type-VI tape (As per ASTM D 4956-09). Jacket shall be provided with Velcro fitting. Back & front area of Jacket shall also be M.



FRP Collapsible Barrier



Make – Sintex | Model – FRP-CLB-2912

Specifications :

Made with FRP Box section 50x50x3 clamped with SMC plate 100x120 mm. Each plate minimum of 115 cm, both the sides of the plate shall have micro prismatic reflective tape

Accessories:

SS Handle, SS Bolt & Nylon Wheels
Max Length- 2900 mm | Min. Length- 420 mm
Affixed on 1" angle of 3 mm
Wheel base (Fitted on 1" angle of 3 mm) width – 470 mm provided with 4" nylon wheel
Weight – 15 kg appx.

FRP Trolley Barrier

Make – Sintex | Model – FRP-TB-2010-01

Specifications :

Made with Pult. Box section 50x50x3 mm, maximum length 1900 mm, apx.
With top cover SMC sheet 880x325x3 mm, apx. shall be provided with the matter, in microprismatic tape as desired by the purchaser.
Middle SMC sheet 1200x700x3 mm, apx. Provided with microprismatic reflective tape and matter as required by the purchaser.

Accessories-

SS Hex Bolt, POP Rivet, Alum. Angle, Nylon wheel | Weight- 55 kg appx.

Product Name – Guardian Angel™ elite series LED Light Bar

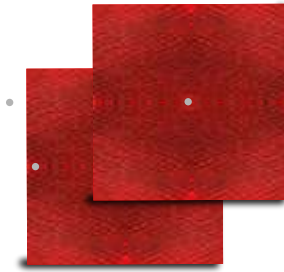


SPECIFICATIONS

<p>Light Source - 18 LED, Colors - Red, White, Blue, Yellow Brightness - Up to 500 Lumens Size (cm)- 6.98W x 4.76L x 2.54H Weight - 3.25oz; 92.4g</p>	<p>Power- Input voltage – 5V via micro USB Connector Power consumption (W) - Normal I/P Voltage DC 3.7V</p>
	<p>Mounting- Neodymian Iron boron grade NB42 Magnets</p>
	<p>Environment- Operational Temp. & humidity- -40C° - 65.56C° Storage Temp. & humidity- 20-25 C°</p>
<p>Battery- Time - Less than 8hrs Nominal Voltage - 3.7V Certification UN38.3 Battery Life hour (Per Charge) - Varies Based on brightness setting Battery Life (Life Cycle) – 1500-3000 cycles Type - Lithium polymer Battery Capacity - 1200mah/4.4Wh Charging</p>	<p>Casing- Material- Polycarbonate, ABS, Rubber IP rating- Pending IP68 Rating Flammability Rating- UL 746B, UL94</p>

WALL/ TREE REFLECTOR - TYPE III
Make – VISHWA | Model – VD35

Made of Aluminium Composite Material (ACM) (overall thickness 3 mm having aluminium foil of thickness 0.2 mm on both the side) of size 10x10 cm properly affixed with high intensity micro prismatic.



OBJECT HAZARD MARKER
Make- VISHWA | Model – VD38

Marker shall be made of rectangle Aluminium Composite Material (ACM) (overall thickness 3 mm having aluminium foil of thickness 0.2 mm on both the side) size 900x300mm, having crosswise 100mm wide yellow high intensity micro prismatic type-IV tape (As per IRC 67/2010) with alternating black shall be provided. This rectangle sheet shall be mounted on 48mm dia, 1.2mm thick of M.S. powder coated pipe of total length 1800mm including 400 mm grouting part. The grouting part shall be provide with hole pass for strengthen the fix.



ROAD DELINEATORS (METAL) TYPE-II
Make- VISHWA | Model – VD39

Made up of M S Pipe having outer dia 100mm, thickness 1.2 mm & 1000mm length, duly power coated in black/white colour. At the top of pipe, high intensity micro prismatic type-IV tape (As per IRC 67/2010) should be affixed i.e. 100mm red colour with upper & lower border of 50mm yellow colour tape, the tape portion should be protected by metal jali.



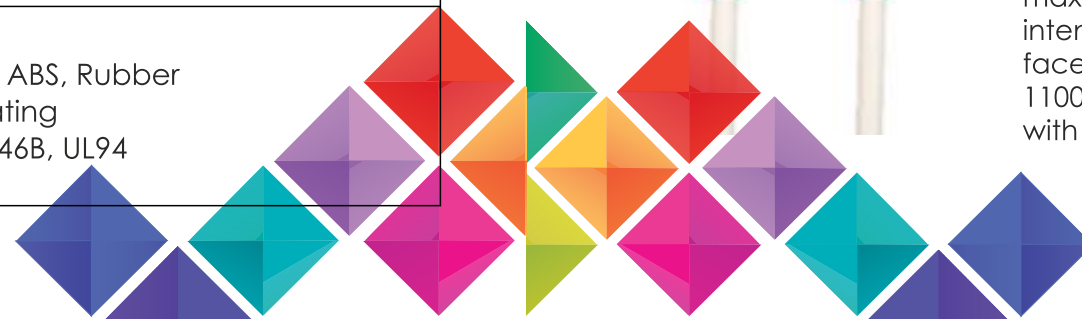
ROAD DELINEATORS (METAL) TYPE-III
Make - VISHWA | Model – VD40

Made up of M S Pipe having outer dia 48mm, thickness 1.2 mm & 1000mm length, duly power coated in black/white colour. At the top of pipe, high intensity micro prismatic type-IV tape (As per IRC 67/2010) should be affixed i.e. 100mm red colour with upper & lower border of 50mm yellow colour tape the tape portion should be protected by metal jali.



DELINEATOR METAL WITH TWIN REFLECTOR ON EACH SIDE
Make - VISHWA | Model – VD57

Two no. of 2 mm thick oval shape powder coated M.S. plate of size Apx. 300 mm x 170 mm (The length & width at the maximum end) shall have two no. of 100 mm Ø acrylic made high intensity reflectors duly affixed in such a way that reflectors should face outer side of plate. The twin plate shall be affixed on Apx. 1100 mm height 50 mm dia 1.2mm powder coated pipe with anti theft lockings





बाड़ीवार्न कैमरे लेकर उतरी पुलिस

पहले दिन 8 पाइंटों पर पुलिसकर्मियों ने कैमरे के सामने की जांच



केस 1
दोपहर 12 बजे, बोरियाबुर्दे के पास
दोपहर 12 बजे, बोरियाबुर्दे के पास एक ट्रैफिक पुलिसकर्मी ने बाड़ीवार्न कैमरे से एक वाहन को रोक रखा। पुलिसकर्मी ने वाहन के ड्राइवर को बाड़ीवार्न कैमरे के सामने खड़ा किया और वाहन के अंदर जाकर वाहन के ड्राइवर को कैमरे से चेक कराया।

केस 2
दोपहर-12.45 बजे, शारदा चौक
दोपहर 12.45 बजे, शारदा चौक एक ट्रैफिक पुलिसकर्मी ने बाड़ीवार्न कैमरे से एक वाहन को रोक रखा। पुलिसकर्मी ने वाहन के ड्राइवर को बाड़ीवार्न कैमरे के सामने खड़ा किया और वाहन के अंदर जाकर वाहन के ड्राइवर को कैमरे से चेक कराया।

हरियुग्मि ब्यूज 8M रायपुर
दिल्ली और मुंबई को जाने पर ट्रैफिक पुलिस बाड़ीवार्न कैमरे से लेना होकर पहले दिन चेक पर उतरी। शहरभर के 8 पाइंटों पर पुलिसकर्मी ने बाड़ीवार्न कैमरे से चेक कराया।

25 सेगणिसत बाड़ीवार्न कैमरे से 12 मीटर के खड़े एक की रिकॉर्डिंग
पहले दिन 8 पाइंटों पर पुलिसकर्मी ने बाड़ीवार्न कैमरे से चेक कराया।

वहां बाड़ीवार्न कैमरे की निगरानी में जांच
हरियुग्मि ब्यूज 8M रायपुर के बाड़ीवार्न कैमरे की निगरानी में जांच की जा रही है।

पुलिस की सुरक्षा का अहम हथियार
पुलिस की सुरक्षा का अहम हथियार बाड़ीवार्न कैमरे की निगरानी में जांच की जा रही है।

आफसर करने में मोनितरिंग
आफसर करने में मोनितरिंग बाड़ीवार्न कैमरे की निगरानी में जांच की जा रही है।

ट्रैफिक का हर चालान होगा रिकॉर्ड, वर्दी में लगेगा कैमरा

पहली बार बाॅडी वॉर्न कैमरे का किया ट्रायल, सरकार की मंजूरी मिलते ही सबसे पहले खरीदी राजधानी के लिए

हरियुग्मि ब्यूज 8M रायपुर के बाड़ीवार्न कैमरे की निगरानी में जांच की जा रही है।

पहली बार बाॅडी वॉर्न कैमरे का किया ट्रायल, सरकार की मंजूरी मिलते ही सबसे पहले खरीदी राजधानी के लिए

हरियुग्मि ब्यूज 8M रायपुर के बाड़ीवार्न कैमरे की निगरानी में जांच की जा रही है।

Traffic policemen get body cameras to record violations



Members support for a traffic violation? This is before you get the police in Delhi as well. Traffic policemen will be wearing body cameras to record violations.

बाॅडीवार्न कैमरा का उपयोग व ट्रेनिंग करते हुए ऊजैन रातायात पुलिस



चालानी कार्रवाई के दौरान अधिकारियों-जवानों से उलझना पड़ सकता है भारी

वर्दी में लंदन का बाॅडीवार्न कैमरा लगाकर पुलिस करेगी वाहन चालकों की निगरानी



फुटेज से छेड़छाड़ करना नहीं होगा संभव

पुलिस कार्रवाई में बड़ी रोकथाम करेगी

बाॅडी वार्न कैमरे से लैस हुए ट्रैफिक जवान



बाॅडी वार्न कैमरों से रखेंगे अब यातायात पर नजर



सड़क पर वाद-विवाद से बचने विभाग ने खरीदे कैमरे

झगड़ों के सबूत के लिए 8 ट्रैफिक अफसरों को मिला बाॅडी वॉर्न कैमरा



नवभारत रिपोर्टर | रायपुर

ट्रैफिक सिपाही कैमरे लटकाकर काटेंगे चालान



साराई | बरगु

स्वाइप मशीन के बाद ट्रैफिक पुलिस को दिया वार्न कैमरा

चालानी कार्रवाई के दौरान होने वाली बातचीत होगी रिकार्ड, डिवाइडर पार करने वालों पर भी कार्रवाई

यातायात पुलिस होगी हाईटेक

पुलिस की कार्रवाई में आएगी पारदर्शिता

जवान भी नहीं कर सकेंगे दुर्व्यवहार



शहर की ट्रैफिक पुलिस को हाईटेक किया जा रहा है। पेनाल्टी वसूलने के लिए स्वैप मशीन उपलब्ध कराने के बाद पुलिस प्रशासन द्वारा उन्हें बाॅडी वार्न कैमरा उपलब्ध कराया गया है। बाॅडी वार्न कैमरे का इस्तेमाल करने में दुर्ग प्रदेश का पहला जिला बन गया है। आईजी दीपांशु काबरा और एसपी अमरेश मिश्र की उपस्थिति में मंगलवार को ट्रैफिक पुलिस को 10 बाॅडी वार्न कैमरे सौंपे गए।

जवान भी नहीं कर सकेंगे दुर्व्यवहार

बाॅडी वार्न कैमरा लगाने पर चालकों के साथ-साथ ट्रैफिक पुलिस की बातचीत रिकार्ड होगी। कार्रवाई के दौरान किसने किसके साथ दुर्व्यवहार किया, स्पष्ट हो जाएगा। चालकों द्वारा पुलिस कर्मियों पर दुर्व्यवहार किए जाने का आश्वासन देकर कैमरे लगे हैं।

नियम तोड़कर ट्रैफिक पुलिस से उलझे तो होगी मुश्किल



दुर्ग ट्रैफिक बना प्रदेश में अग्रत



बाॅडी वार्न कैमरों से रखेंगे अब यातायात पर नजर



शहर की ट्रैफिक पुलिस को हाईटेक किया जा रहा है। पेनाल्टी वसूलने के लिए स्वैप मशीन उपलब्ध कराने के बाद पुलिस प्रशासन द्वारा उन्हें बाॅडी वार्न कैमरा उपलब्ध कराया गया है।



पुलिस की कार्रवाई में आएगी पारदर्शिता

